

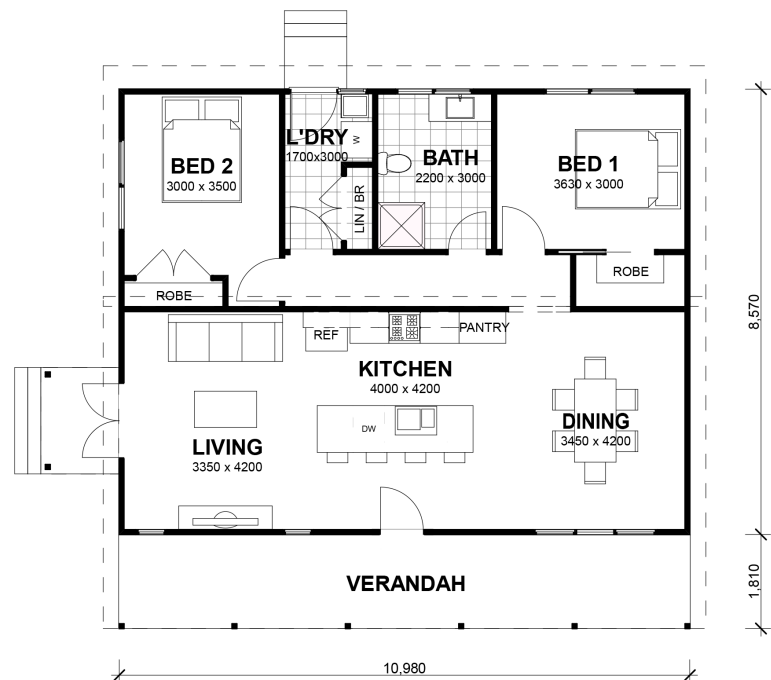


## The Retreat

A compact yet functional home for the weekend getaway or first home. The highlight windows to the Kitchen and Family Room enhance the feeling of open plan living.

### The Retreat 10

House	10.2 sq	94.0 m <sup>2</sup>
Verandah	2.4 sq	23.0 m <sup>2</sup>
<b>Total</b>	<b>12.6 sq</b>	<b>117.0 m<sup>2</sup></b>



### Features

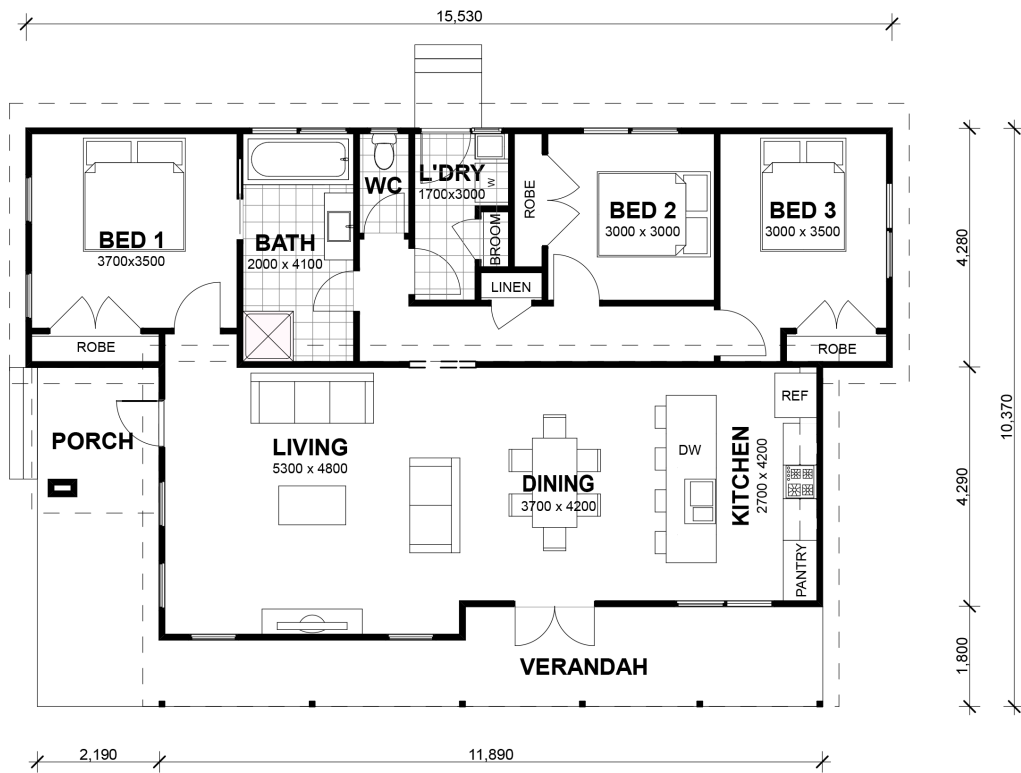
- Open plan living area
- Cathedral ceiling in living area
- Weatherboard and Colorbond cladding
- Verandah under roof line
- 6 Star Energy Rating
- Double glazed windows
- Colorbond roof

### Optional Extras

- Semi-Ensuite to The Retreat 10
- Exposed ceiling to living area
- Decking to Verandah
- Timber floorboards
- Feature brick cladding



www.yarravalleyhomes.com.au  
(03) 5964 3368



### The Retreat 13

House	13.0 sq	120.8 m <sup>2</sup>
Verandah	3.4 sq	35.5 m <sup>2</sup>
<b>Total</b>	<b>16.4 sq</b>	<b>152.3 m<sup>2</sup></b>